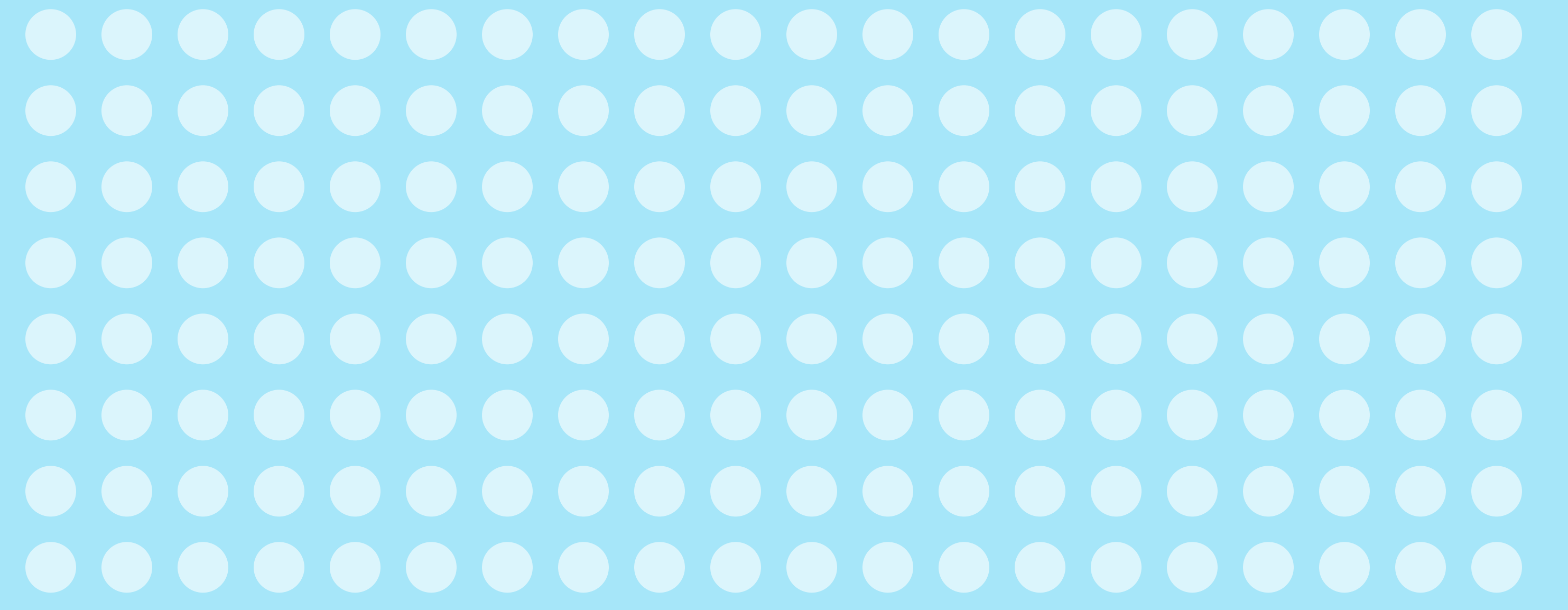


# LABOR

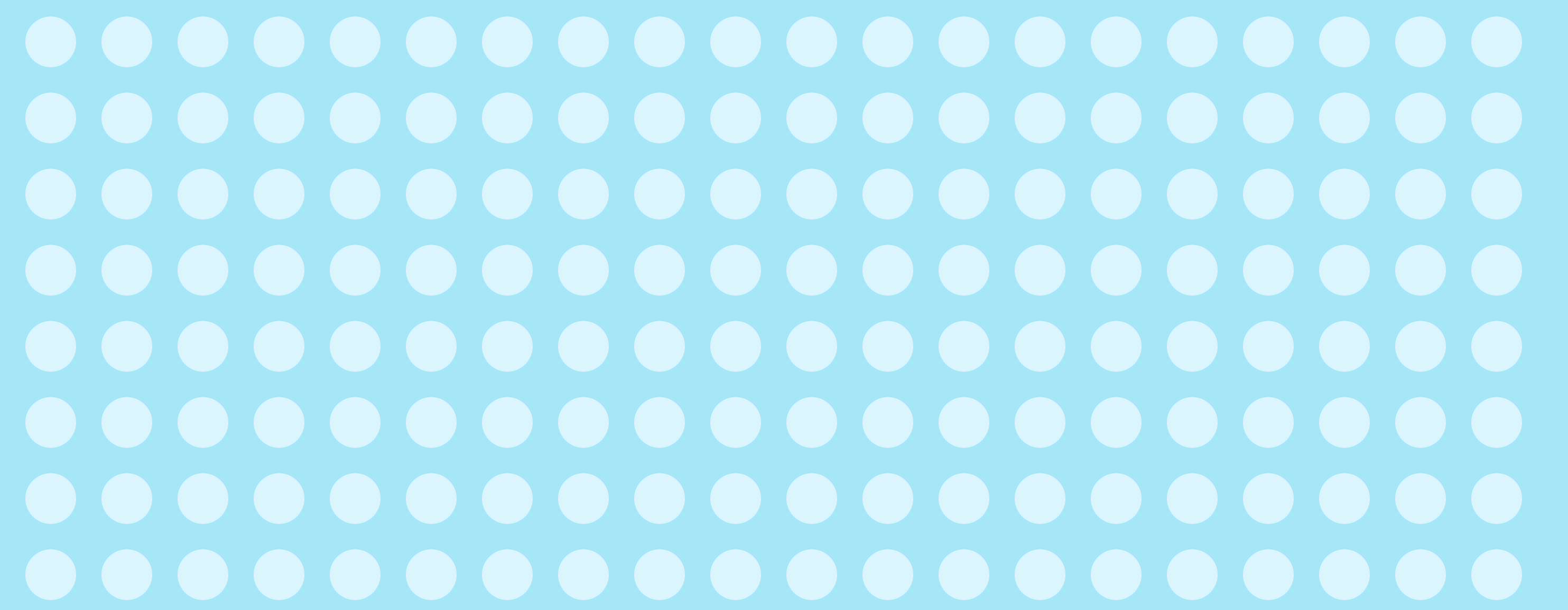
A quality workforce should be considered essential for PWSA to deliver a quality product.

## It is important to me that...

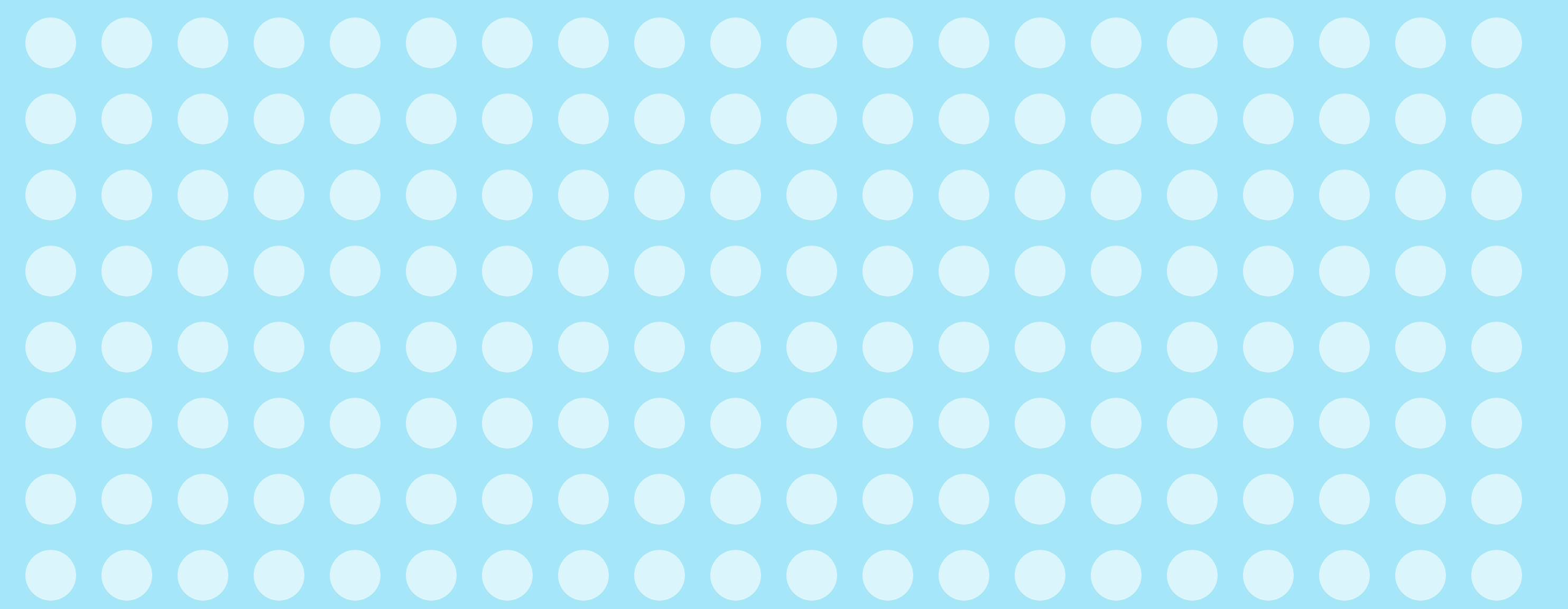
PWSA employees are able to bargain collectively.



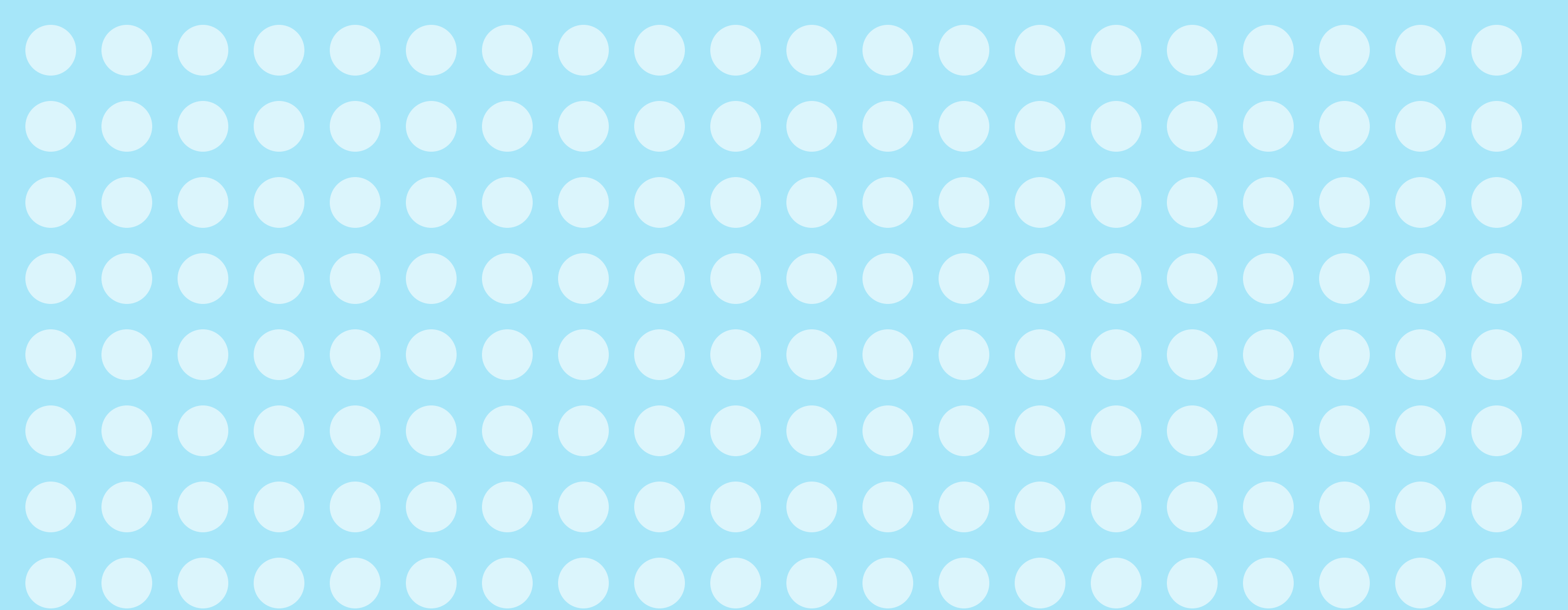
PWSA employees are paid a fair and competitive wage.



PWSA is able to hire the best employees, regardless of their place of residence.



PWSA hires more full time employees and fewer contracted consultants.



# HEALTH & SAFETY

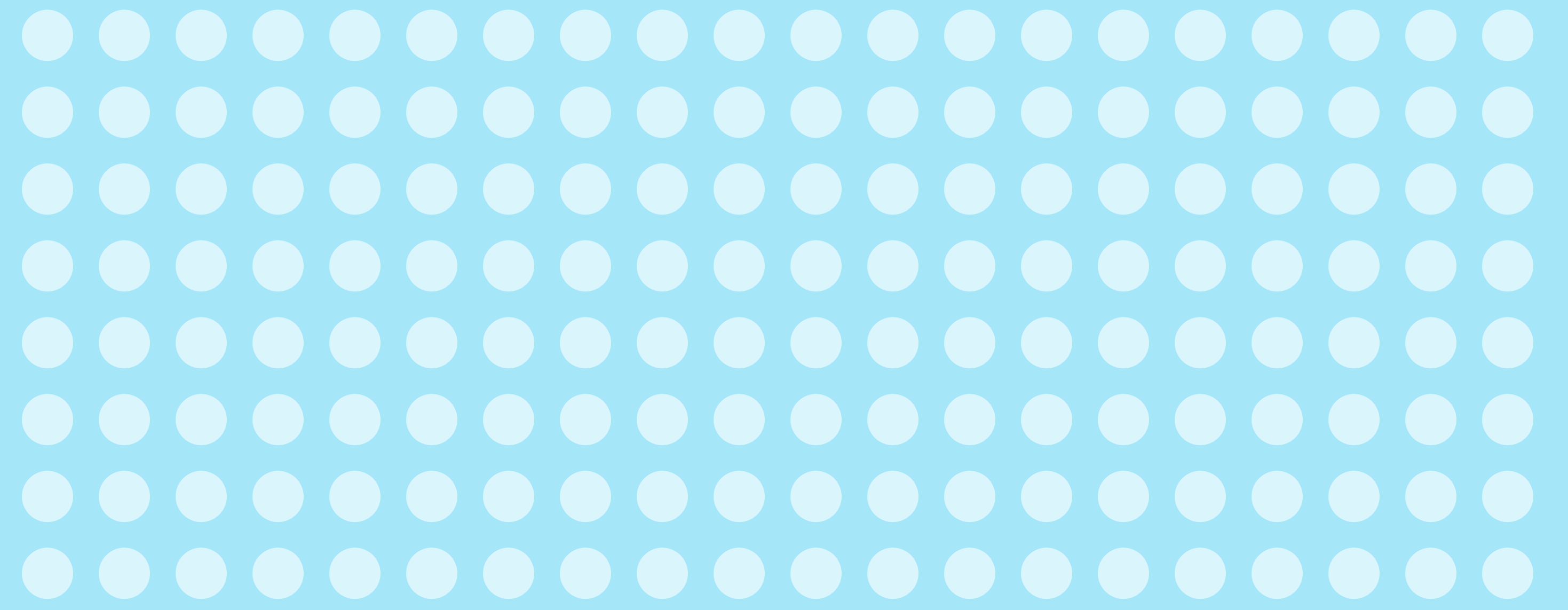
PWSA provides drinking water and should meet high standards for quality.

## It is important to me that...

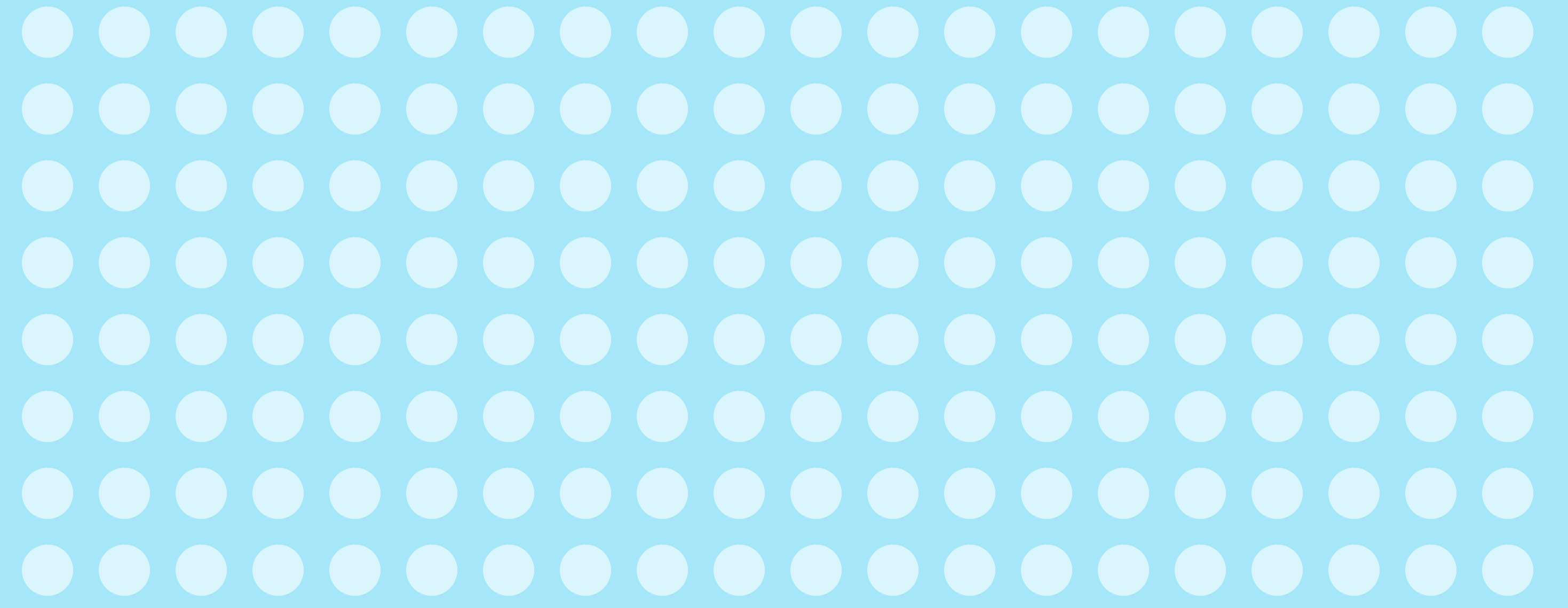
PWSA never needs to issue a boil water order again by improving system redundancy and reliability.



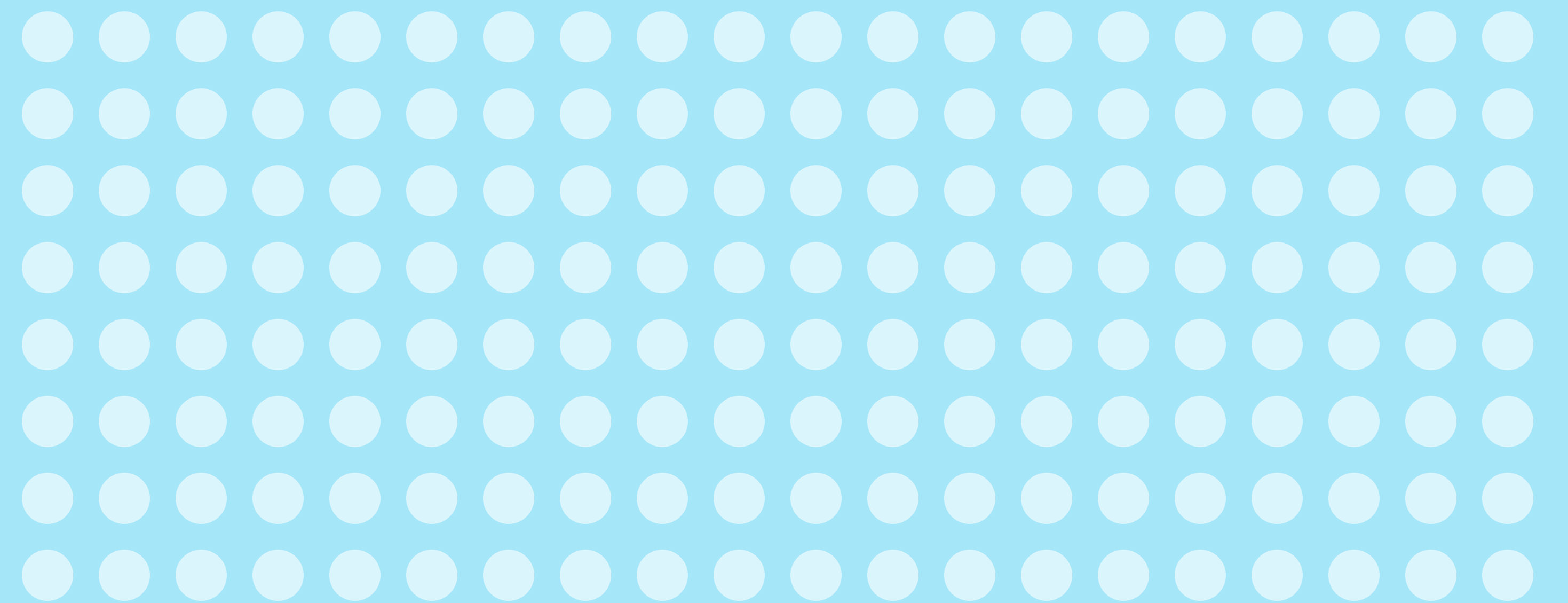
PWSA invests in eliminating all sources of lead contamination, including replacing supply lines on private property.



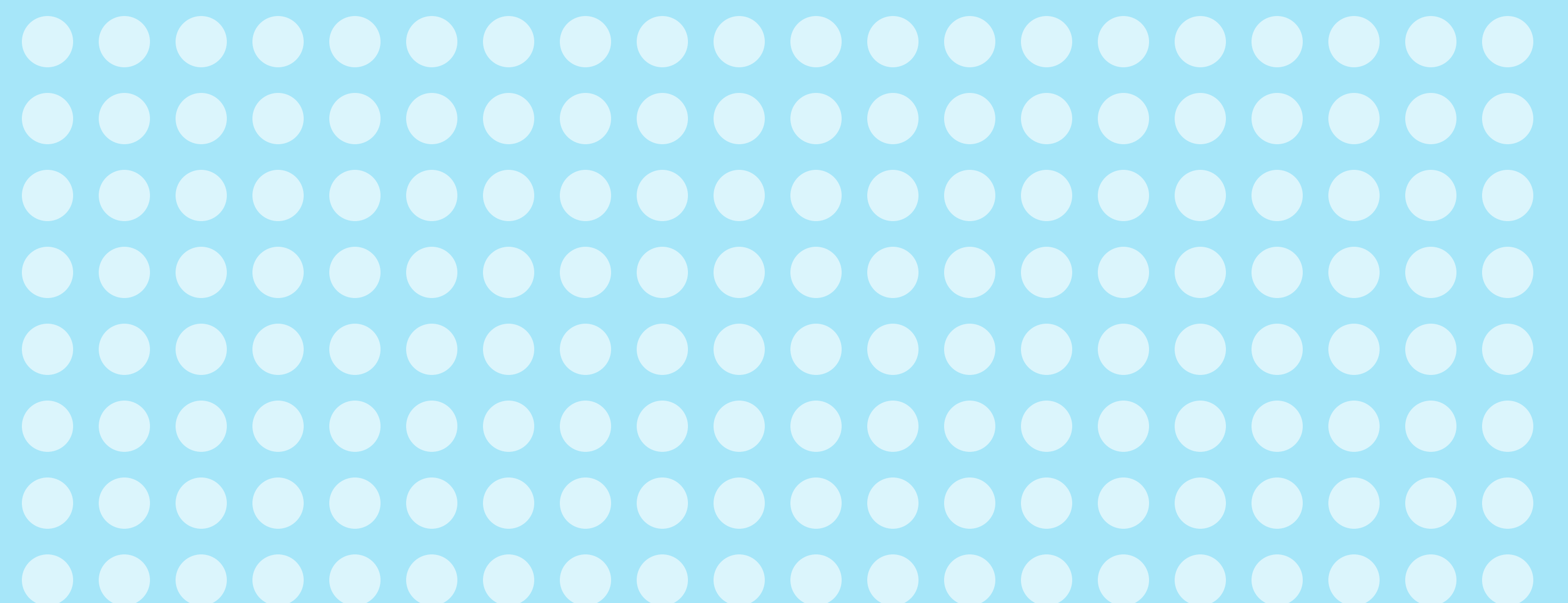
PWSA makes necessary investments in large-scale infrastructure to ensure quality and reliability.



PWSA proactively invests in improvements to ensure full compliance with regulations now and into the future.



PWSA stops deferring maintenance for infrastructure components that put quality and reliability at risk.

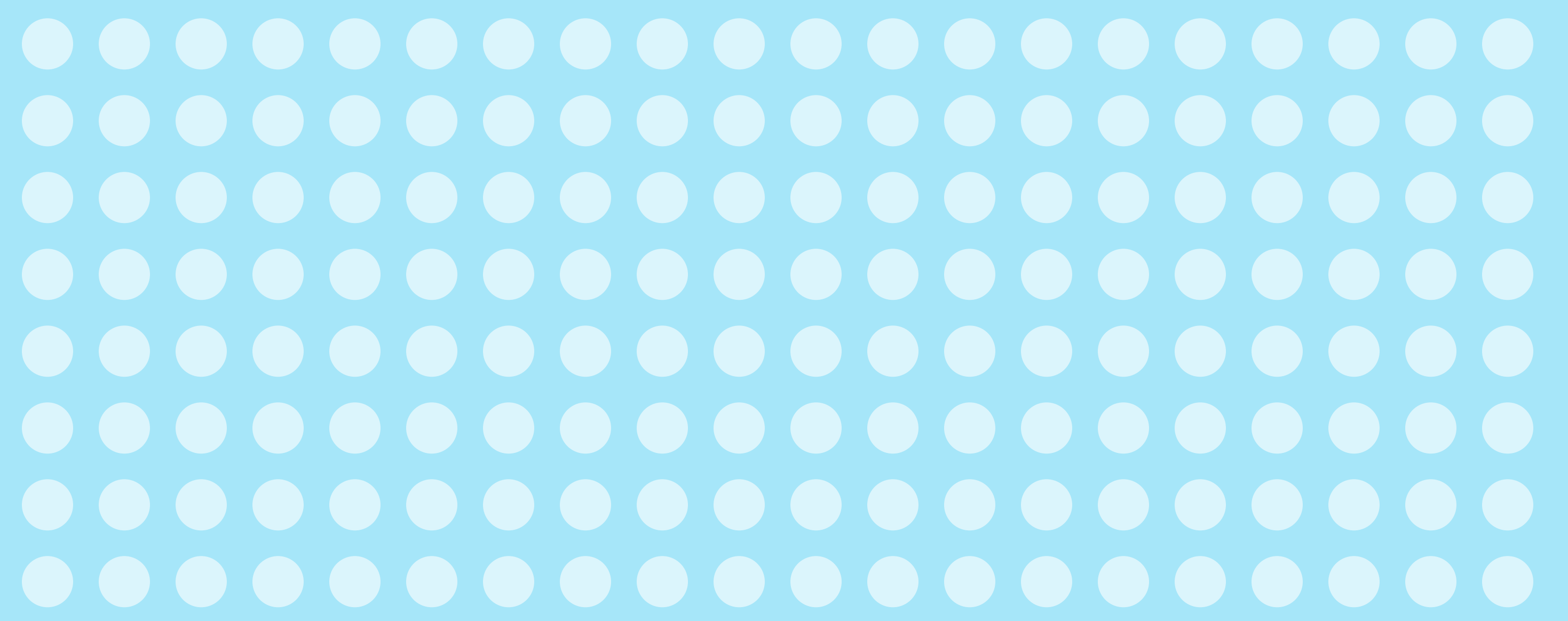


# ACCOUNTABILITY

PWSA should be accountable to the expectations of ratepayers.

## It is important to me that...

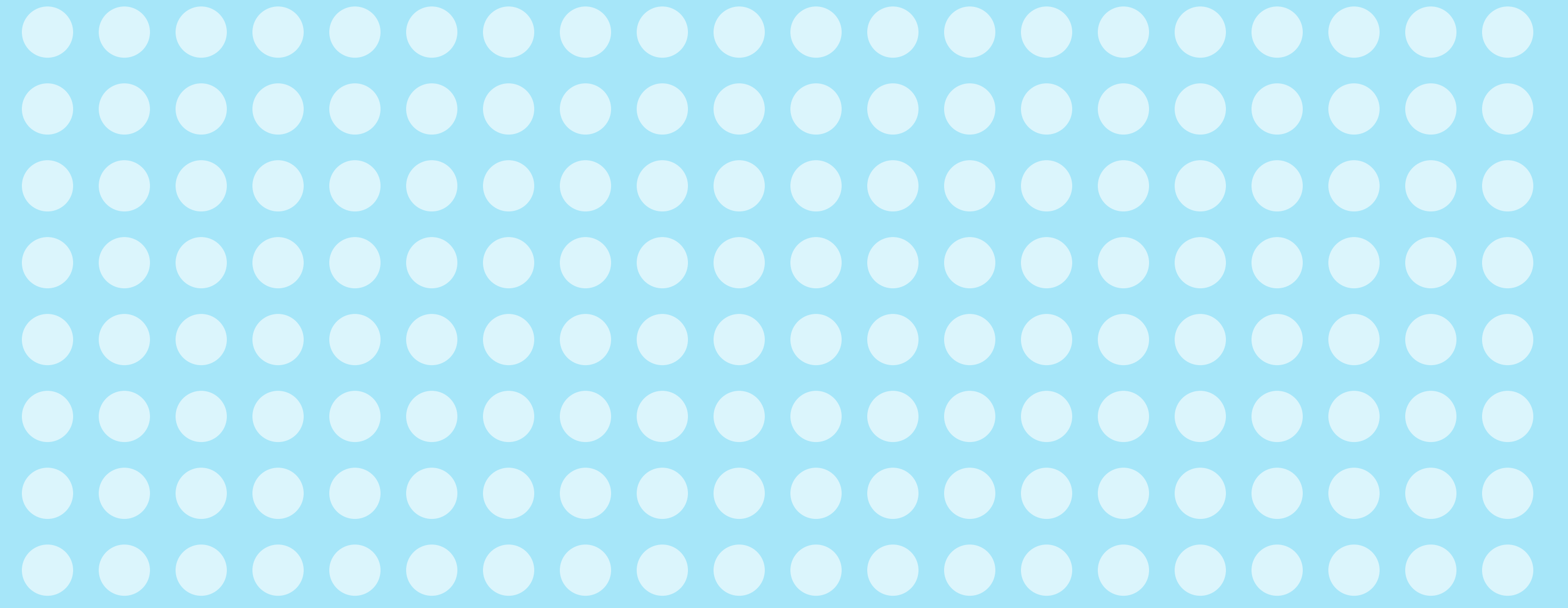
PWSA is regulated by the Public Utilities Commission just as other public utilities are regulated.



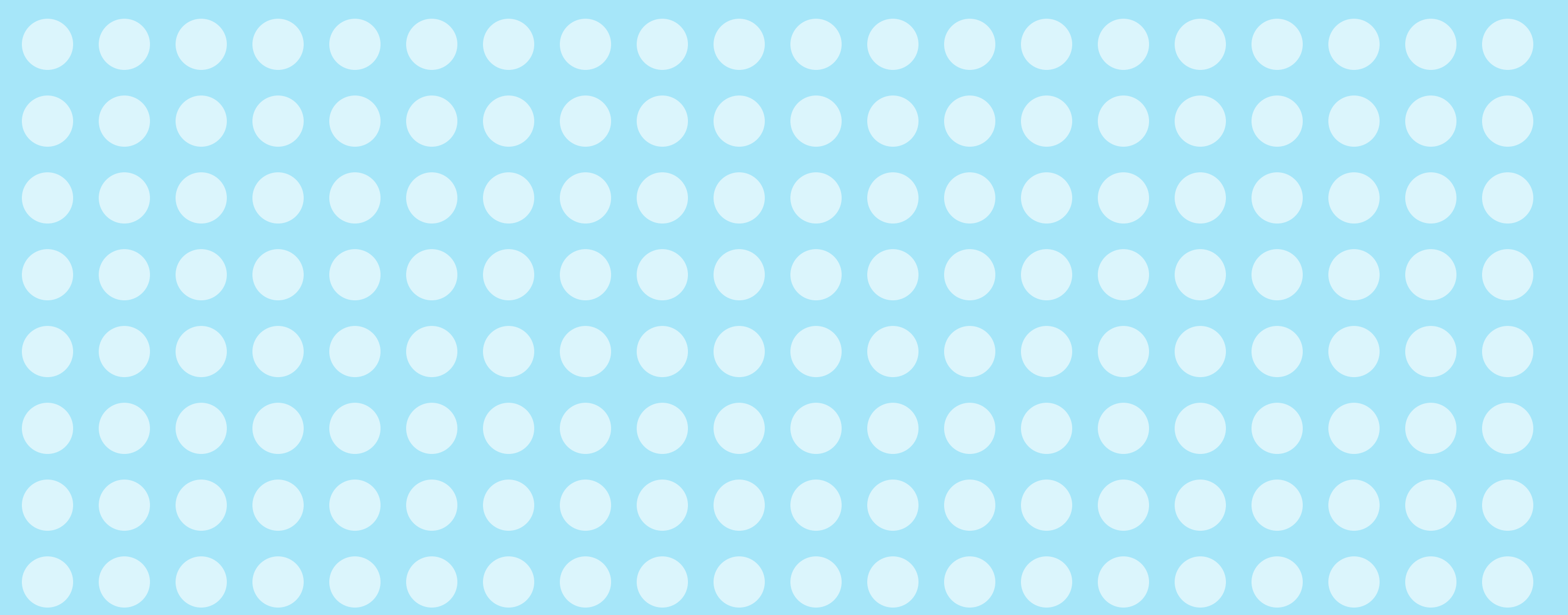
PWSA keeps records and purchases materials and services according to rigorous industry standards.



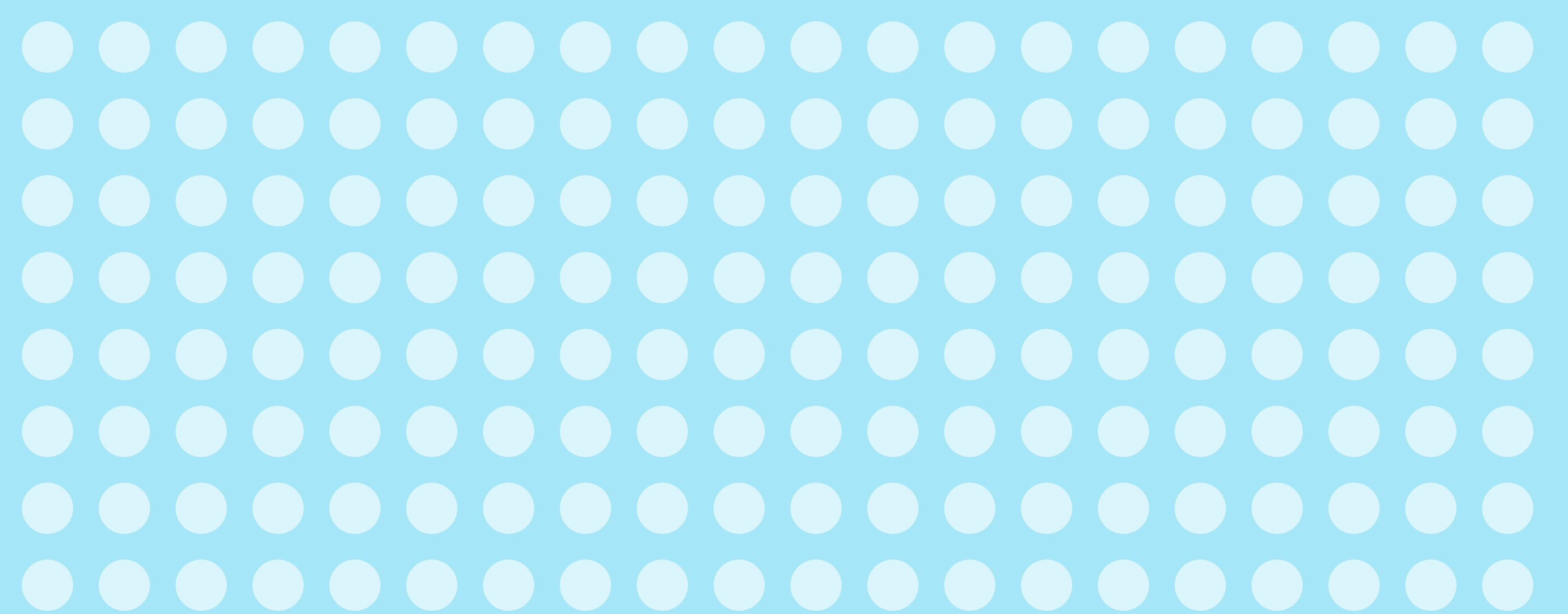
Ownership of water infrastructure prioritizes public benefit over private profit.



Ownership of sewer infrastructure prioritizes public benefit over private profit.



PWSA provides accurate bills and accurately measures water usage.

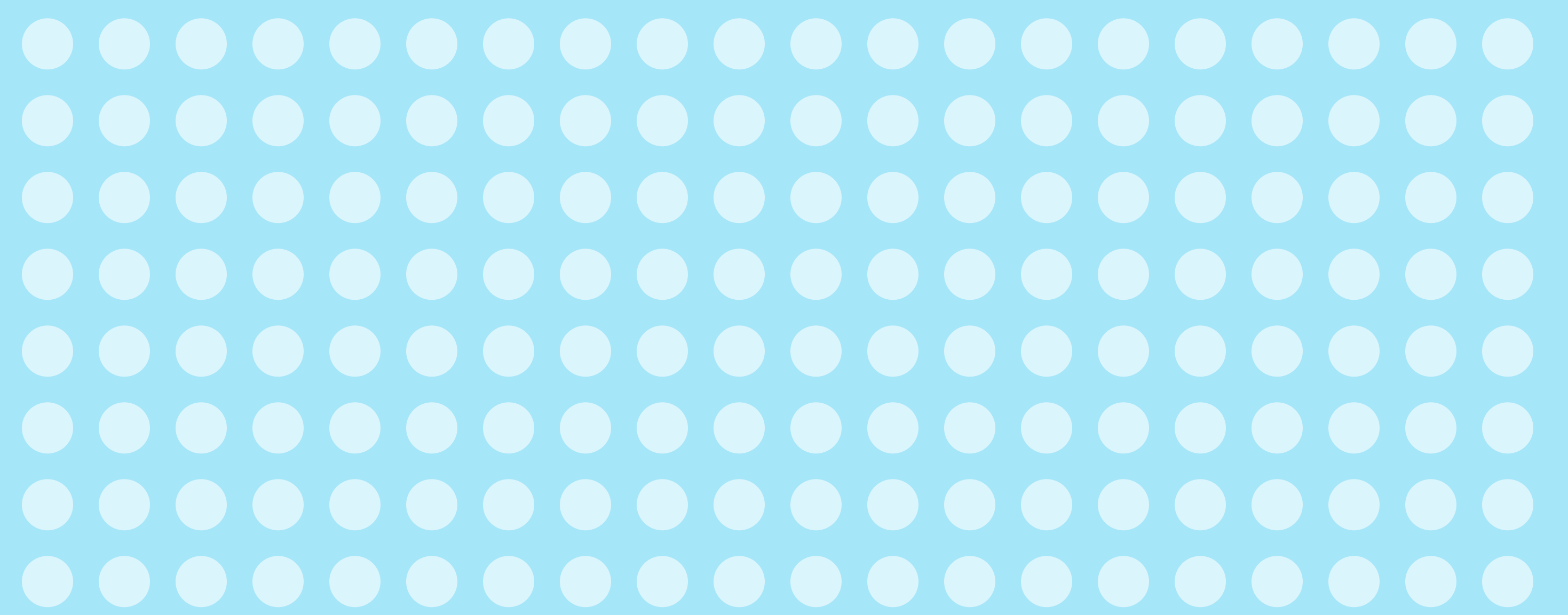


# COST

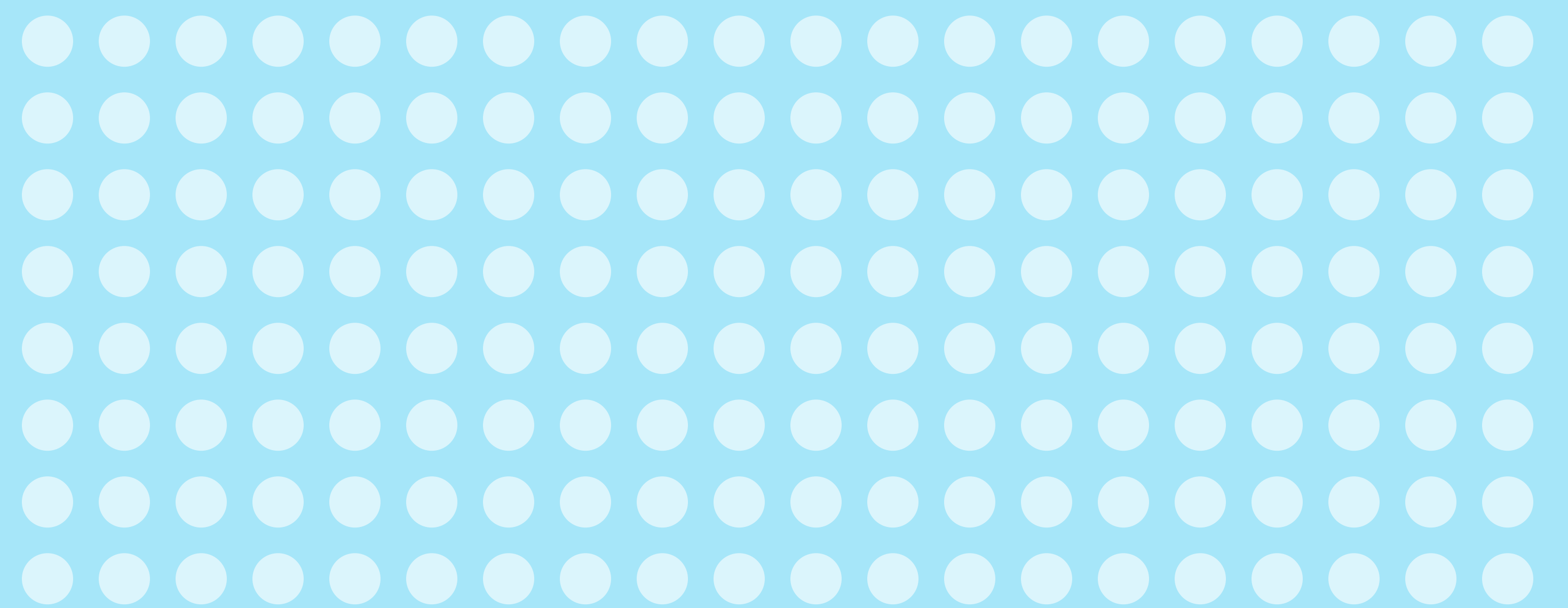
PWSA's rates should be affordable to all users.

## It is important to me that...

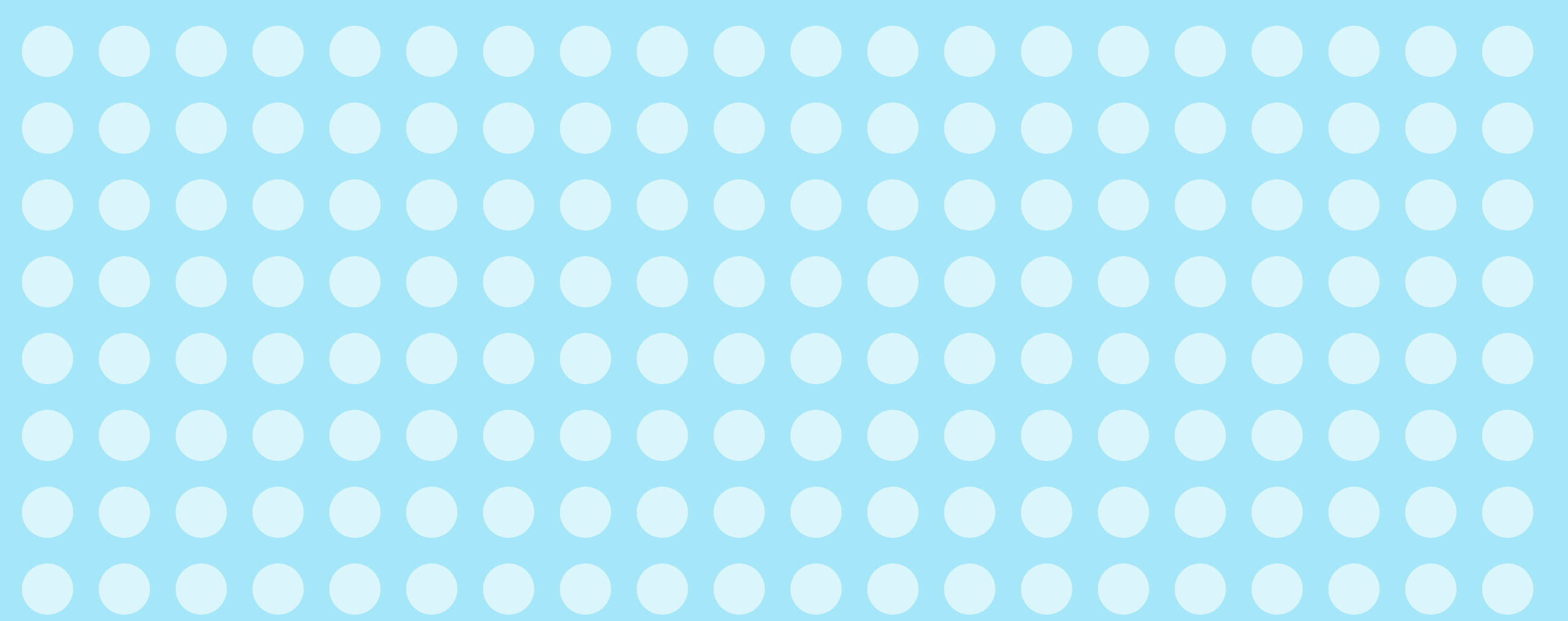
The restructuring of PWSA minimizes the cost impact on ratepayers.



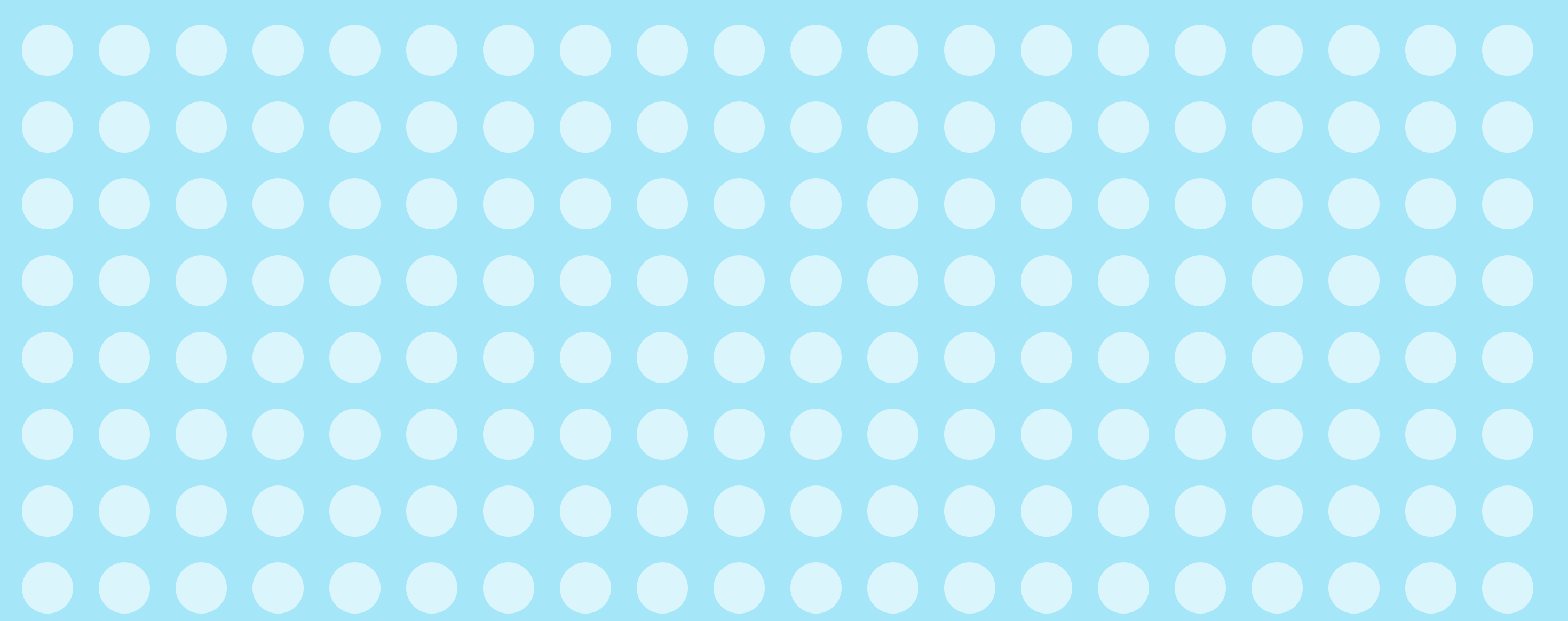
PWSA does not shut off water supply to those who cannot afford to pay their water bill.



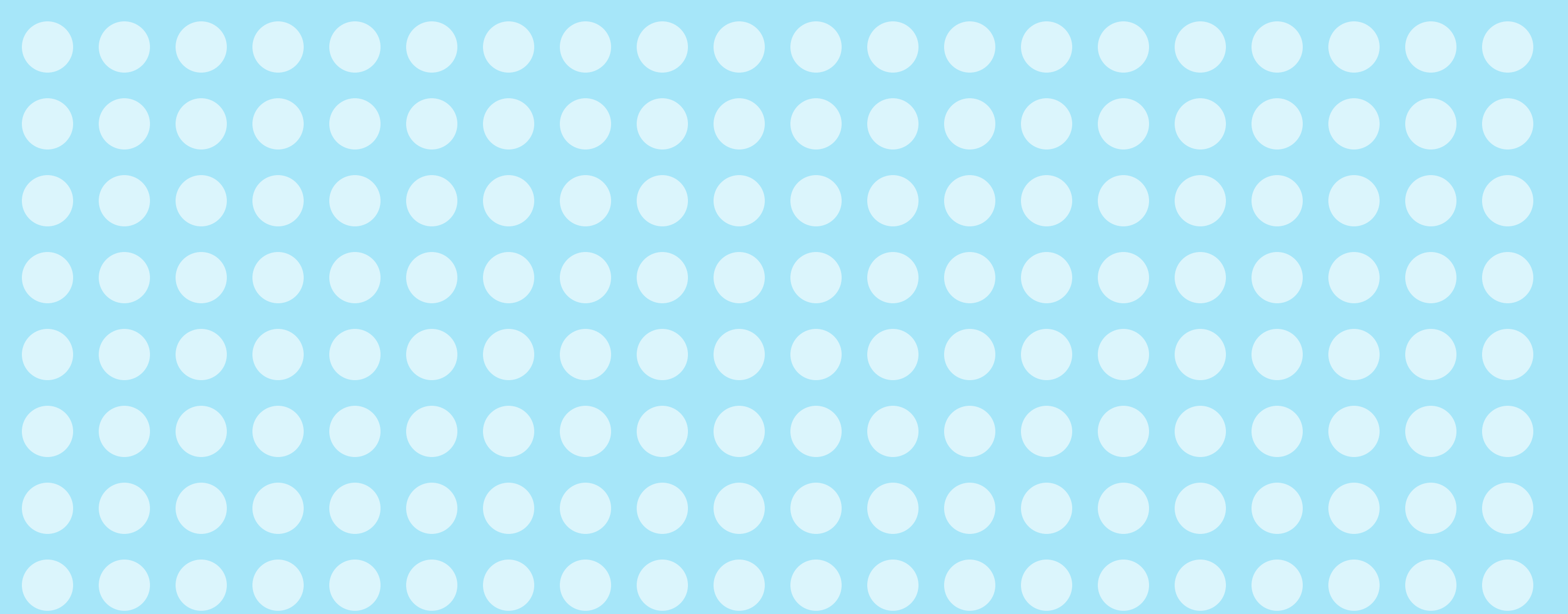
PWSA develops a ratepayer assistance program for families that have difficulty paying their water bill, similar to other local utilities.



Every user of PWSA water pays for the water they use, even institutions who have historically received their water for free.



PWSA water is not lost to leaks, breaks, or other non-revenue generating places.

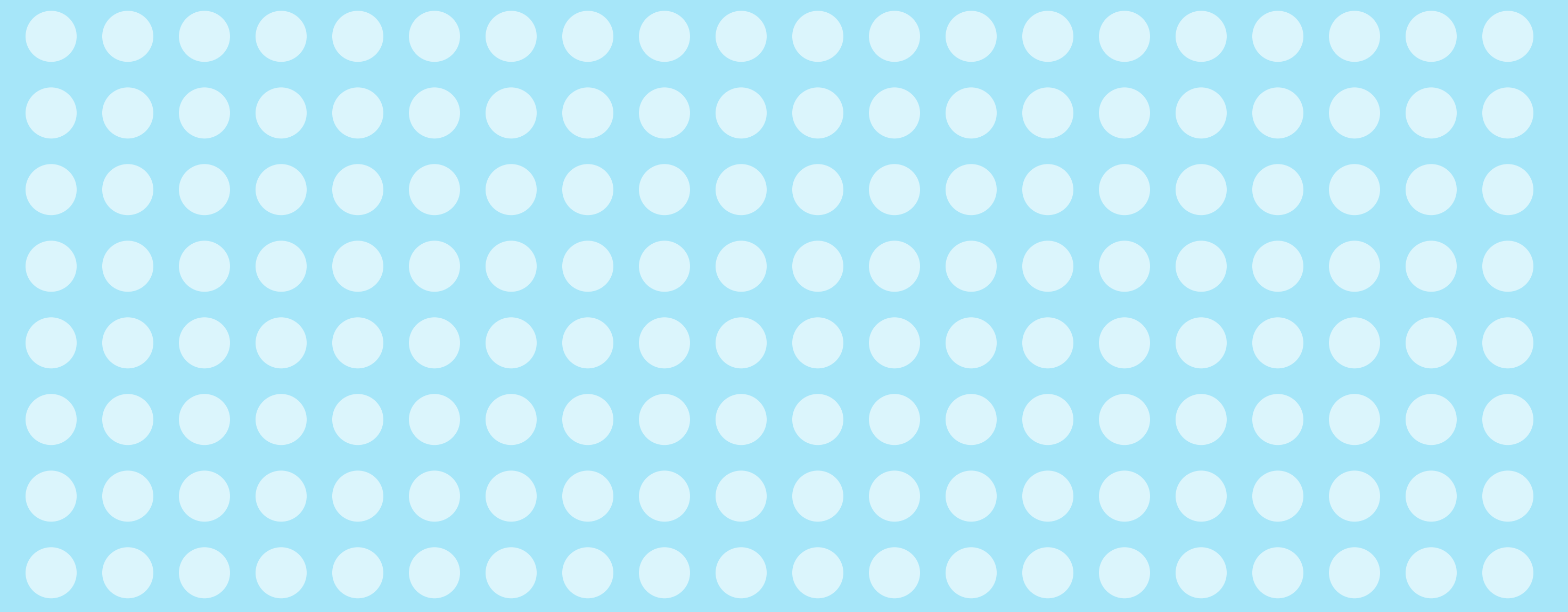


# TRUST & TRANSPARENCY

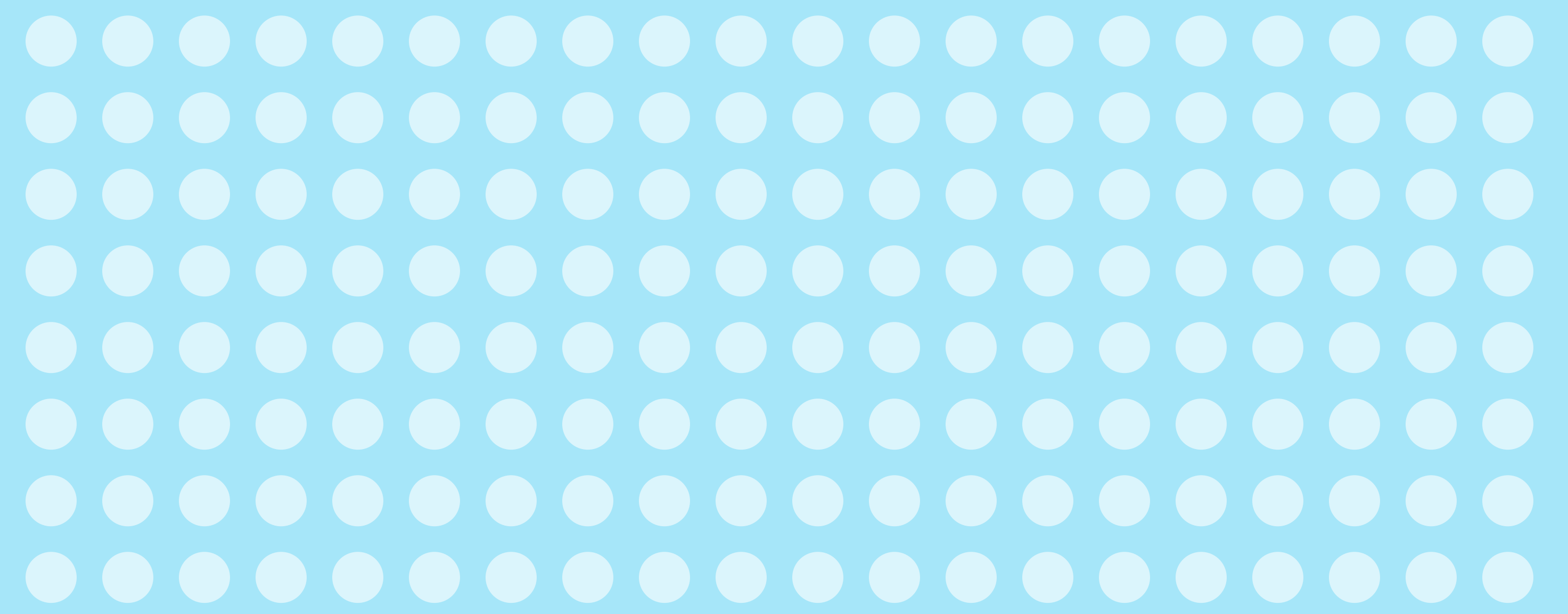
Checks and balances should enable ratepayers to understand and trust PWSA's decisions and actions.

## It is important to me that...

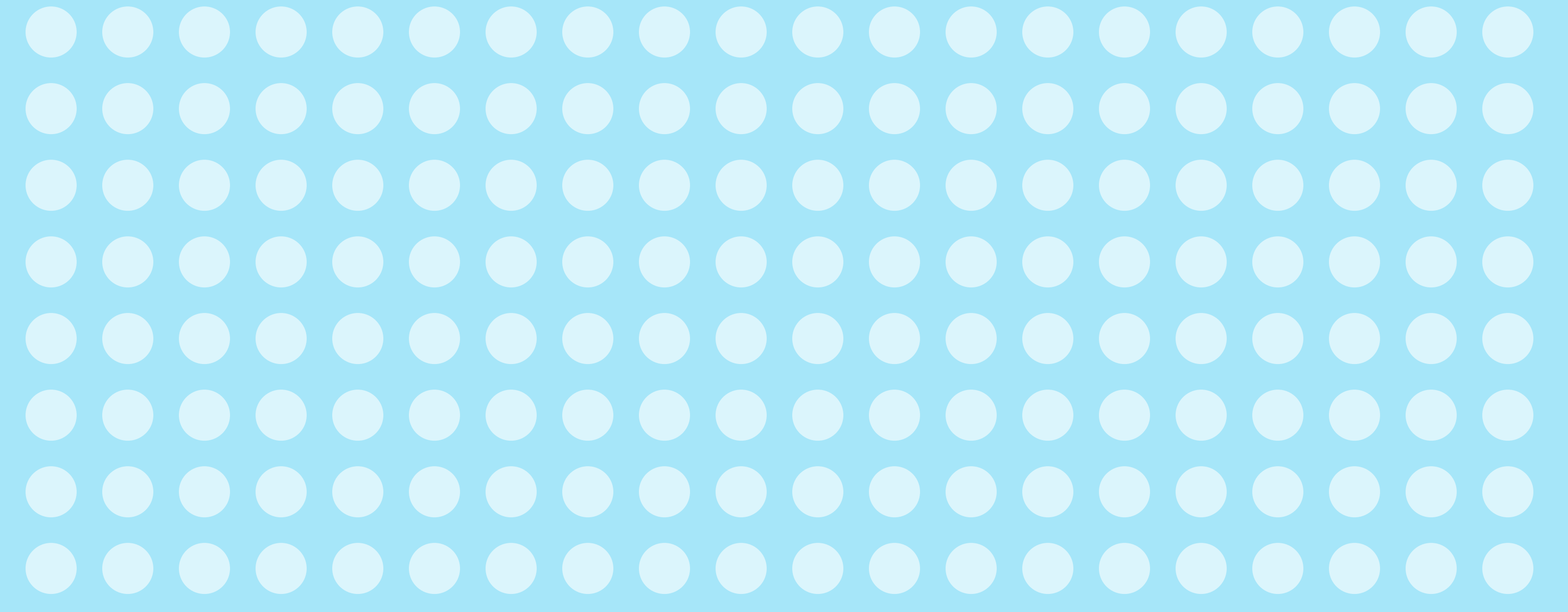
The governing body for PWSA is not affected by or affiliated with municipal or regional politics.



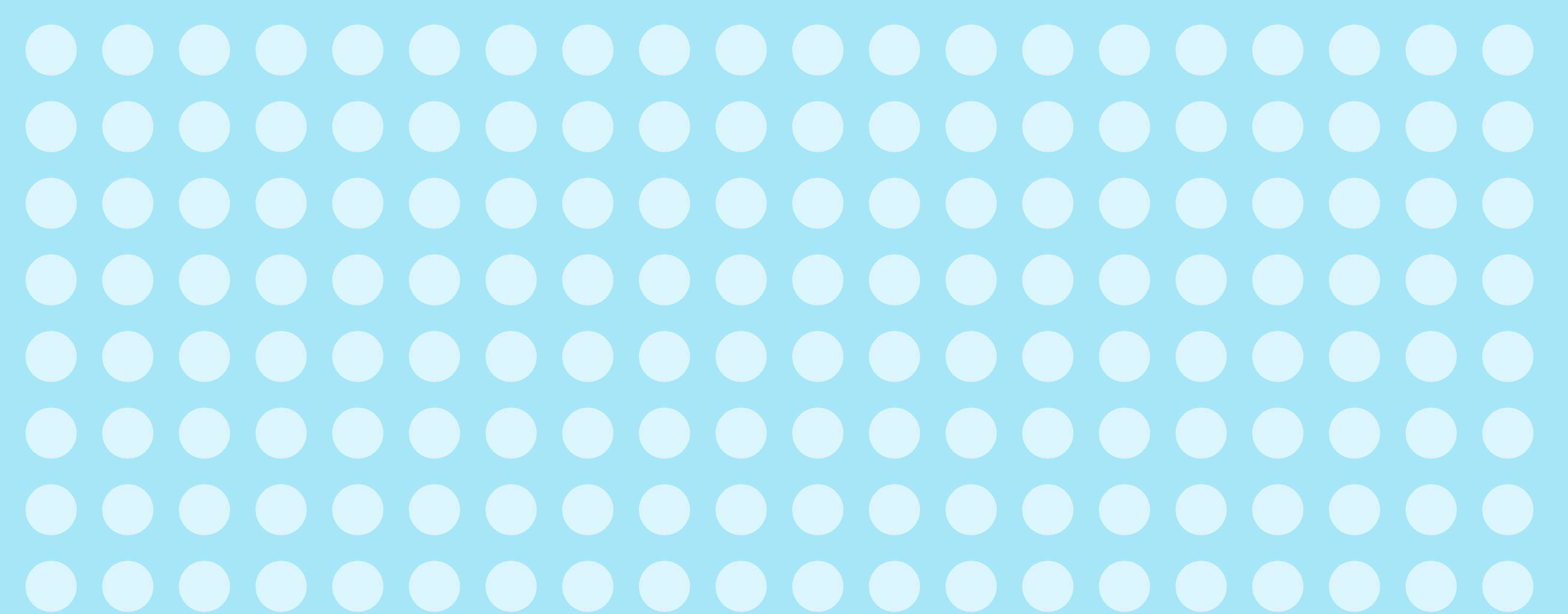
The governing body for PWSA includes topic-area experts for each of its essential functions.



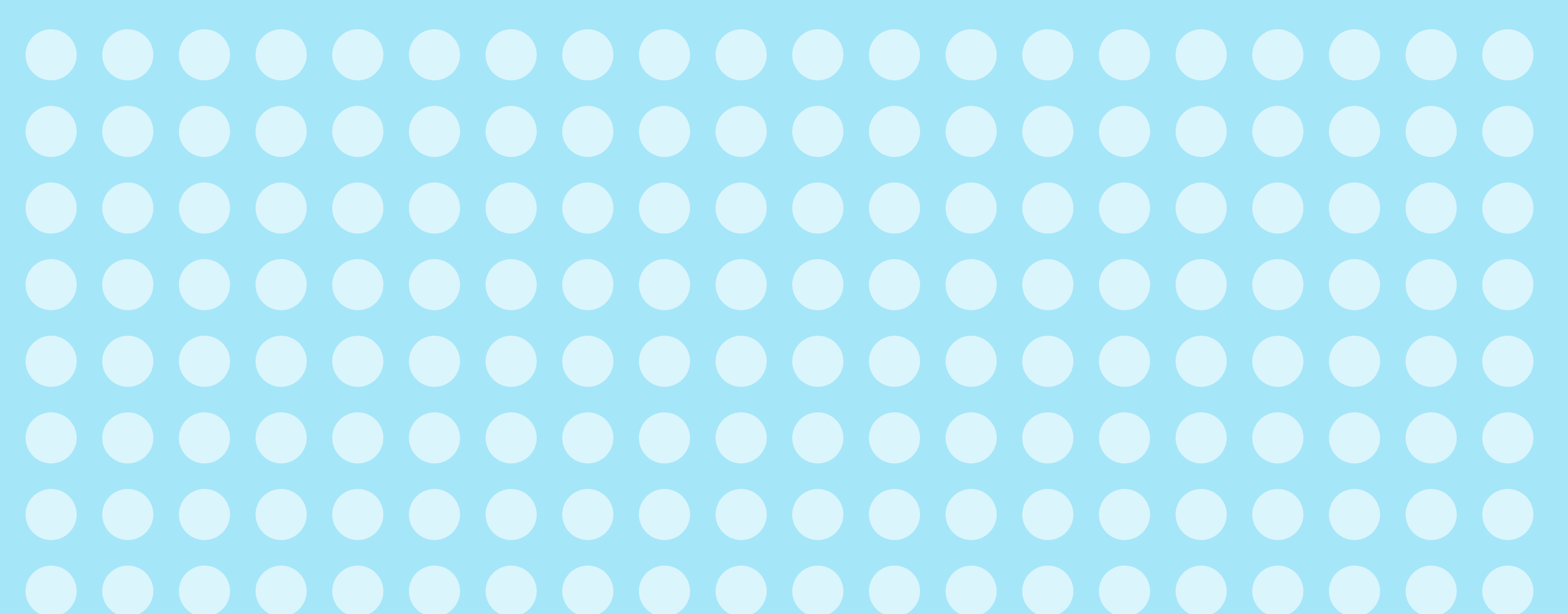
The governing body for PWSA represents the full diversity of the City of Pittsburgh.



The public is regularly engaged throughout the restructuring process in an equitable manner.



All major decisions made by PWSA and its governing body are quickly, clearly, and thoroughly documented for the public.

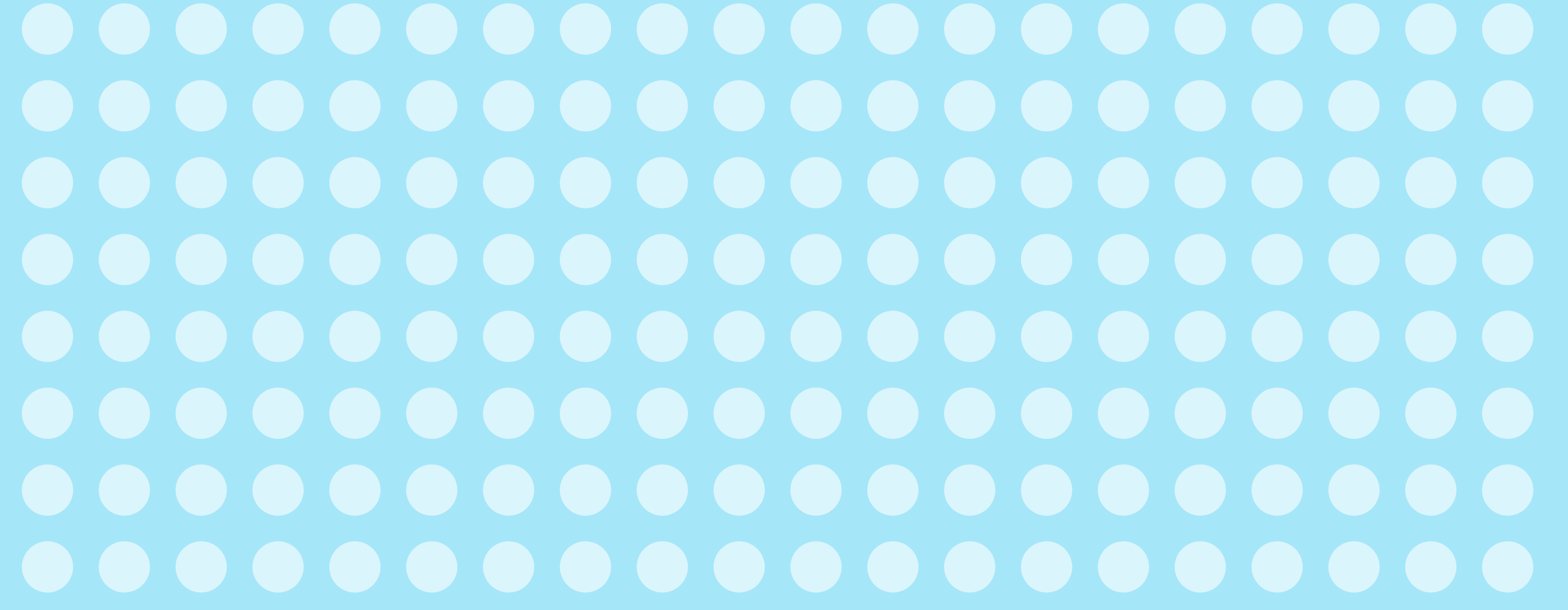


# IMPLEMENTABILITY

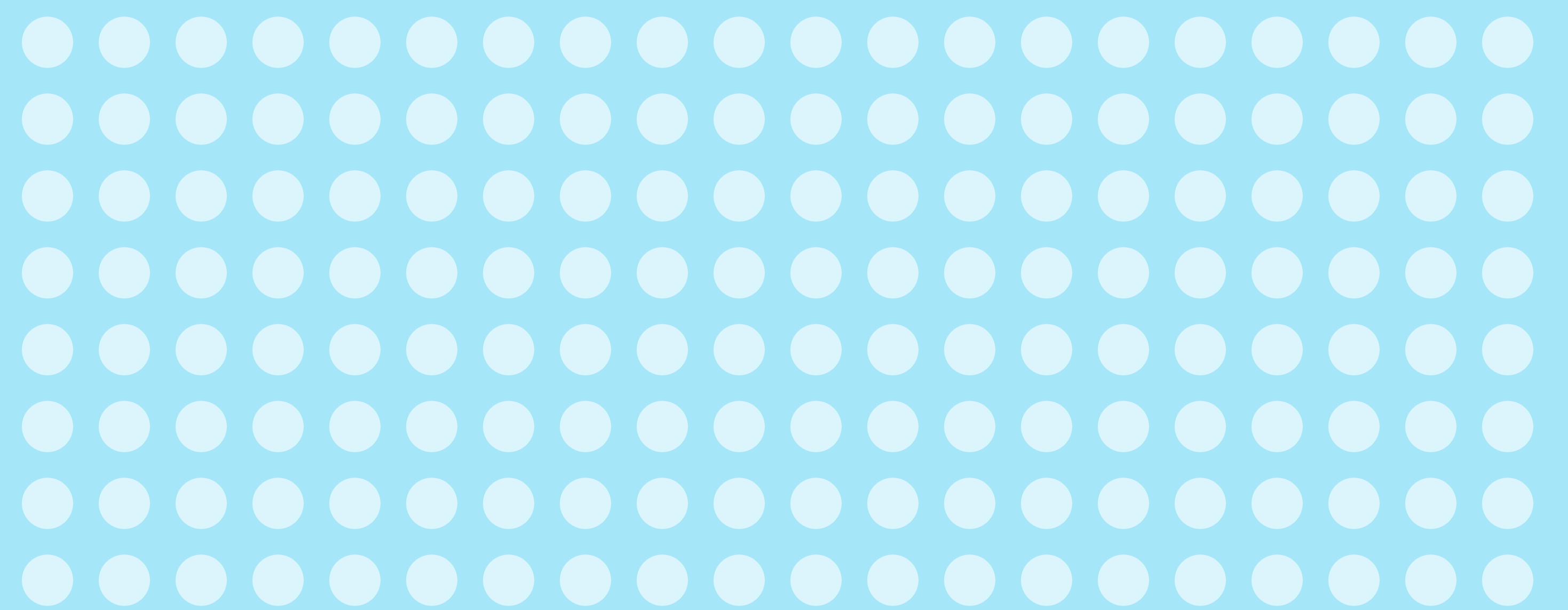
Successful restructuring of the PWSA should balance the need for expediency and political will.

## It is important to me that...

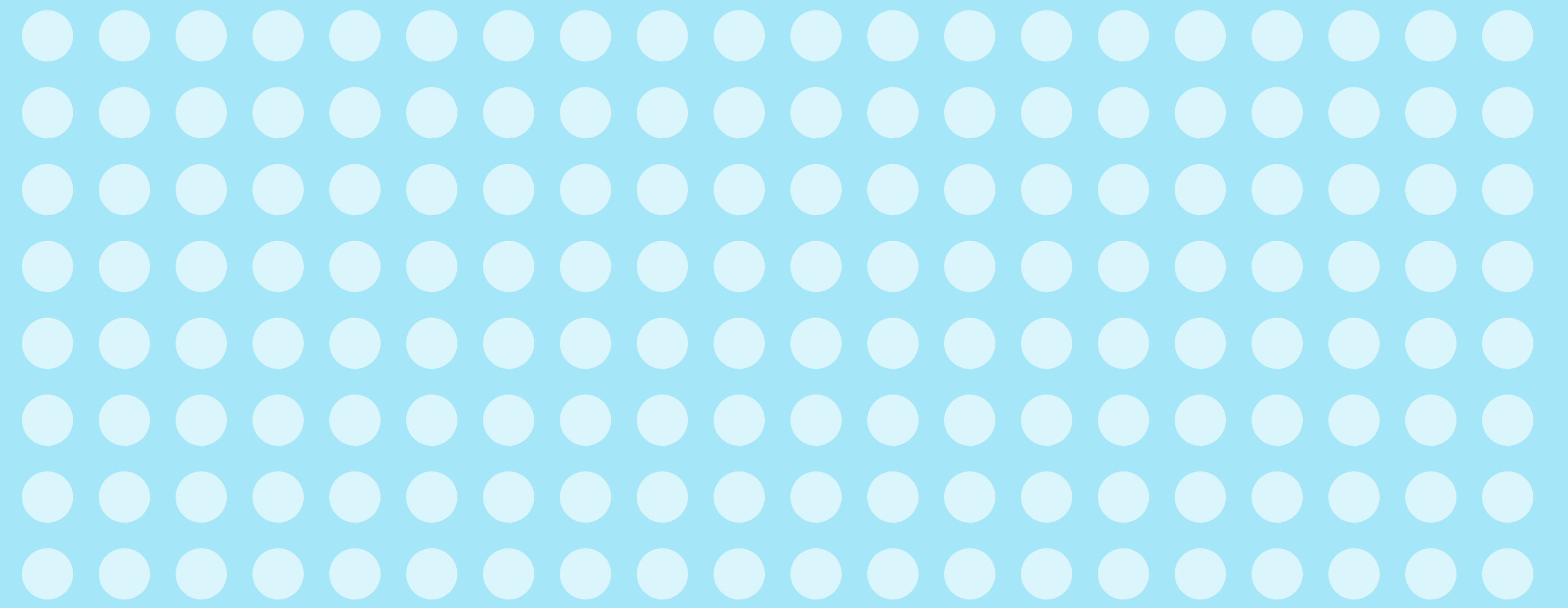
The City's leaders make the successful restructuring of PWSA a top priority.



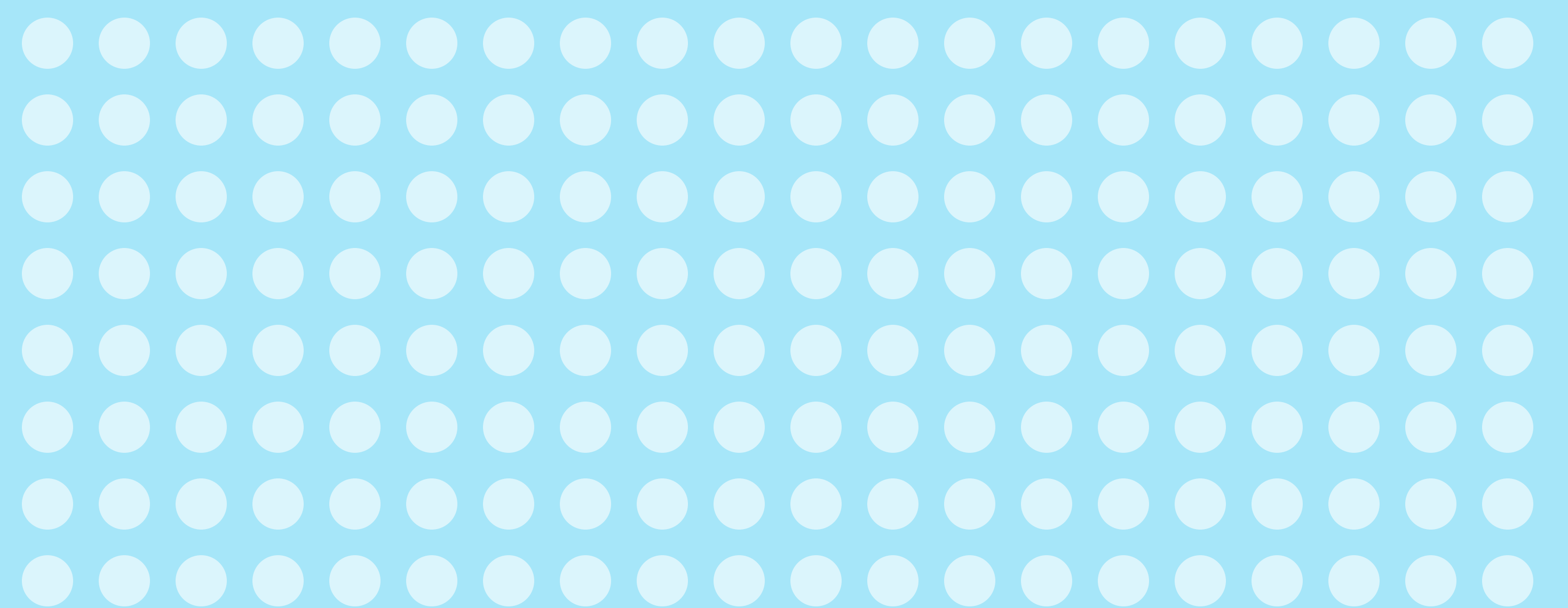
PWSA is restructured quickly and decisively so that it can proceed with necessary investments.



City Departments and regional authorities coordinate and cooperate with PWSA.



The state legislature creates or modifies rules to allow PWSA to effectively solve problems.

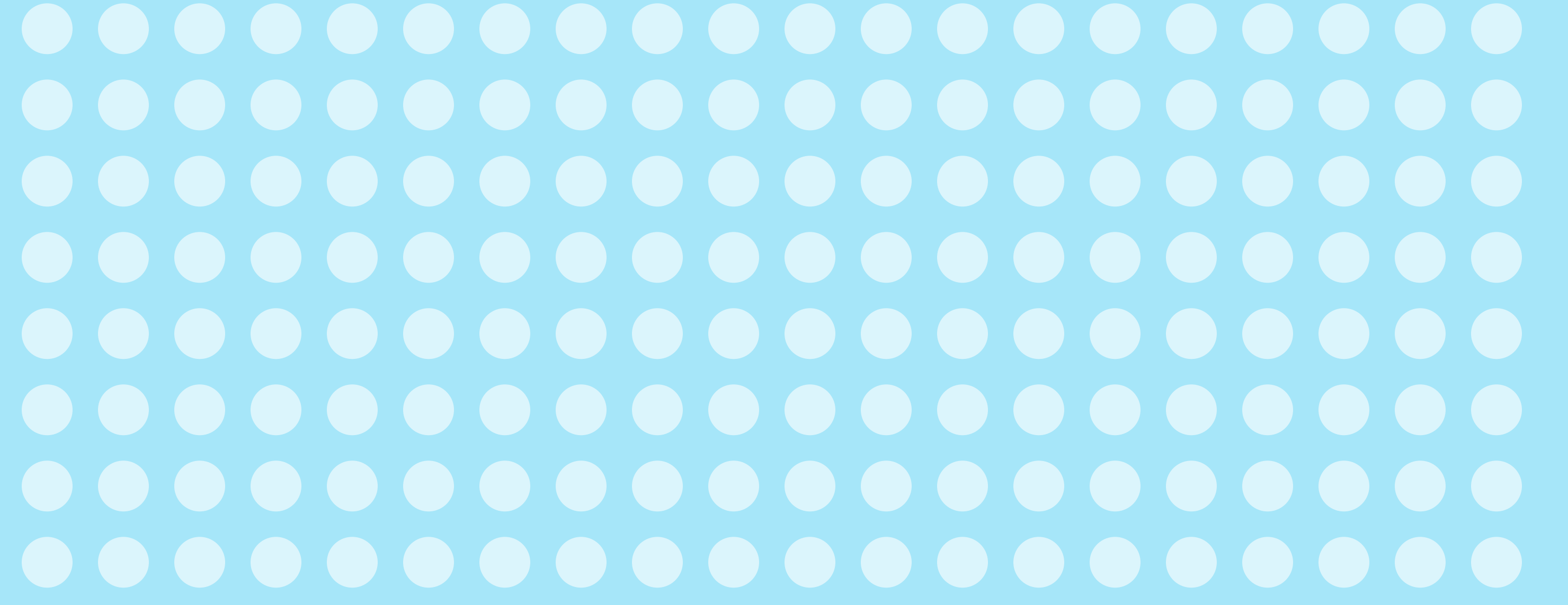


# GREEN INFRASTRUCTURE

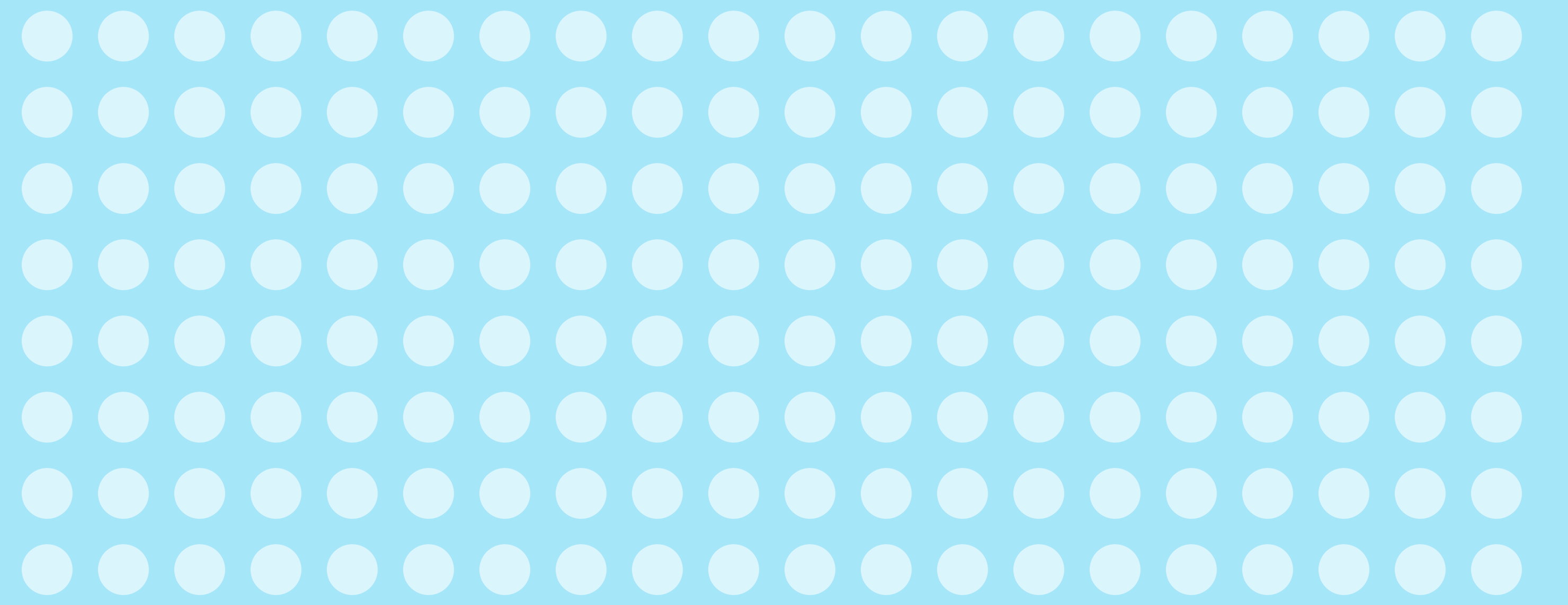
Green Infrastructure should be part of Pittsburgh's solution to eliminate CSOs and reduce flooding.

## It is important to me that...

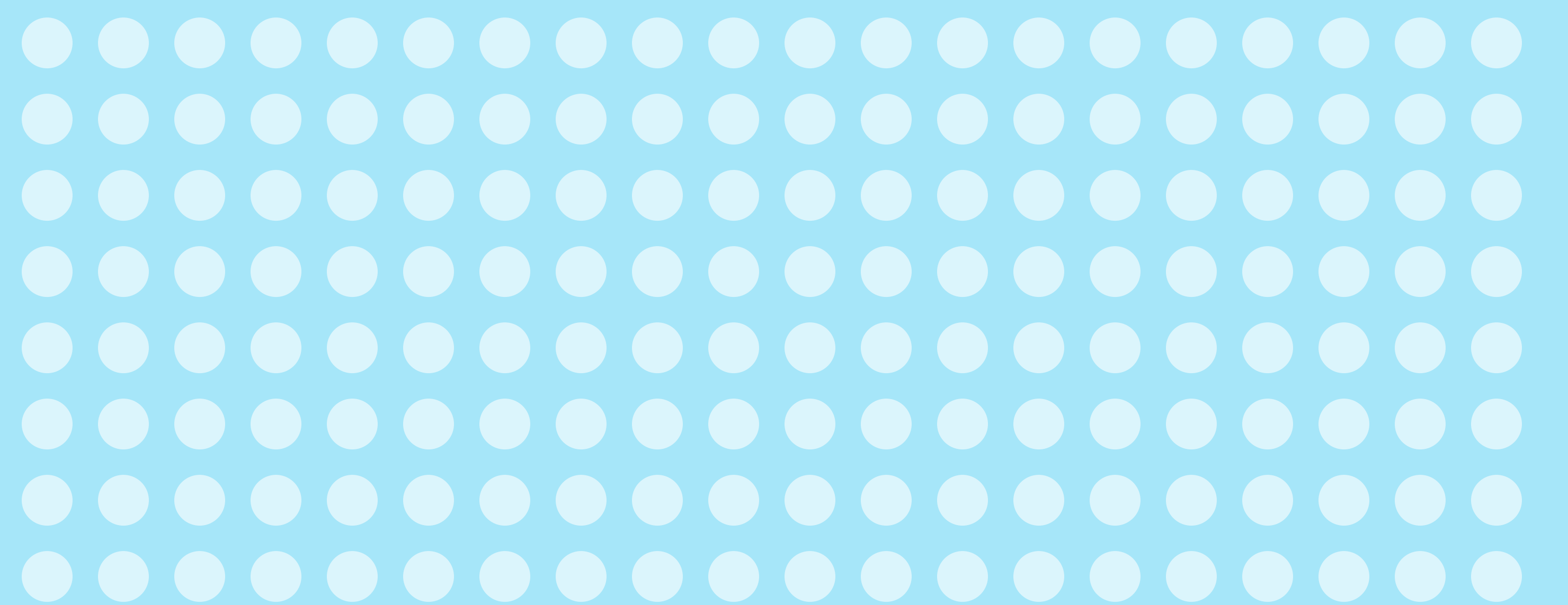
PWSA prioritizes Combined Sewer Overflow reduction as an essential part of its mission.



PWSA implements networked Green Infrastructure to solve Combined Sewer Overflows.



Combined Sewer Overflow mitigation is implemented in a way that catalyzes investment in community priorities.



Green Infrastructure is studied and implemented at the regional scale and not just within the City.

